

## Golden Tulip Africa celebrates the Grand Opening of Golden Tulip Kin Oasis Kinshasa, a new landmark for the city's hospitality sector

Golden Tulip Africa, part of Louvre Hotels Group, 2<sup>nd</sup> largest hotel operator in Europe, proudly announces the official opening of its newest flagship property, Golden Tulip Kin Oasis Kinshasa. The inauguration ceremony, held on 5 December, brought together leaders from the Kinshasa community, corporate sector, diplomatic missions, and high-level government officials to celebrate this major milestone in the city's fast-evolving hospitality landscape.



Strategically located at the intersection of Avenue de la Libération (formerly 24 Novembre) and Avenue Kasa-Vubu, in the vibrant commune of Bandalungwa, the new Golden Tulip Kin Oasis stands at the heart of an iconic neighborhood known for its artistic energy and cultural heritage. Just 25 km from Ndjili International Airport and 7 km from Ndolo National Airport, the hotel is ideally positioned between the administrative district and the industrial zone of Limeté, offering seamless accessibility for business travelers, corporate delegations, and leisure guests alike.

The Golden Tulip Kin Oasis Kinshasa offers **187 contemporary rooms**, including: 152 premium rooms, 27 elegant suites, 7 studios and 1 presidential suite. Many rooms offer serene city views and private balconies. Each space combines comfort, modernity, and signature Golden

Tulip design, equipped with centralized air conditioning, smart TVs, premium bedding, and refined bathrooms.

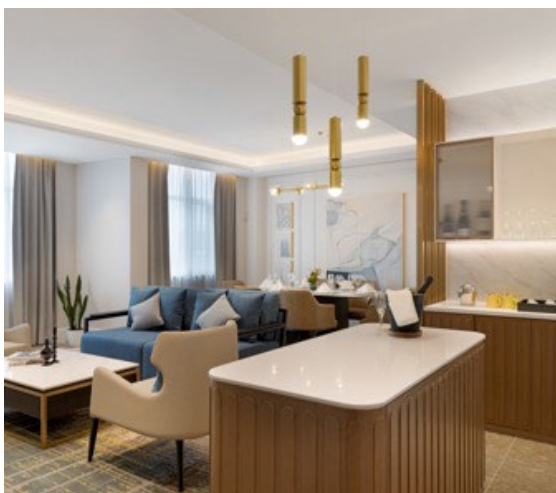
The hotel is also home to two signature dining venues:

#### **L'Atelier**

An elegant all-day dining restaurant offering international buffets, à la carte menus, and an exclusive Wine Bar featuring local and international selections.

#### **Jardin d'Orient**

A contemporary destination for authentic Chinese gastronomy, delivering a culinary journey inspired by the Silk Road.



Designed as a hub for meetings and celebrations, the hotel features a complete range of event spaces, including the Jacaranda Ballroom, multiple meeting rooms (Hibiscus, Orchidée, Baobab, Kuba), and a VIP Lounge—accommodating everything from private board meetings to large-scale events of up to 300 guests.

Guests can also enjoy a semi-Olympic swimming pool, gym, 24/7 concierge, airport transfers, high-speed Wi-Fi, and flexible check-in/check-out.

During the opening ceremony, **Mr. Alain Sebah, President of Golden Tulip Africa, Louvre Hotels Group**, emphasized the vision and impact of the new property:

*"The Golden Tulip Kin Oasis Kinshasa is far more than a hotel, we reaffirm through this opening our commitment to investing in people, developing local talent, and contributing to the growth of tourism and business travel in the region. This opening marks a new chapter for hospitality in Kinshasa, and we are proud to take part in the country's dynamic development."*

**Andreas Tscherning, Chief Operating Officer International Operations of Louvre Hotels Group**, added a message of international significance:

*"The opening of Golden Tulip Kin Oasis Kinshasa marks an important step in Louvre Hotels Group's expansion across Africa. Kinshasa is a dynamic economic and cultural capital, and this hotel reflects our long-term commitment to supporting Africa's growth with world-class hospitality standards. We are proud to contribute to the city's development and to offer a 4-star address that combines superior comfort, uncompromising service, and refined cuisine."*



### About Louvre Hotels Group

*Louvre Hotels Group is a major player in the global hospitality industry, with a portfolio that now includes over 1,750 hotels in 70 countries. It has a full hotel offering, spanning 1 star to 5 stars, with the brands: Première Classe, Hoshō, Kyriad, Campanile, TULIP Hotels & Residences, Golden Tulip and Royal Tulip; the 5 brands of the Sarovar network in India, the French Group Hôtels & Préférence and the brand TemptingPlaces.*

*Louvre Hotels Group is a subsidiary of Jin Jiang International Holdings Co., Ltd., the 2nd hospitality group in the world.*

### About Golden Tulip

*The Golden Tulip hotel chain was founded in the 1960's, when the first properties opened in the Netherlands. Then, it experienced a constant development and expanded across the globe, while always remaining attentive to the evolving needs and expectations of its clients. As part of Louvre Hotels Group, the upscale brand is present with 160 high-end hotels across nearly 40 countries. Each unique, the brand's hotels feature a discreet and elegant style. They offer stays that combine relaxation, uncompromising service, and refined cuisine for all travelers, whether they are there for business or leisure.*



Kyriad



SAROVAR HOTELS



TEMPTINGPLACES  
COLLECTION

ROYAL  
TULIP

Louvre Hotels  
GROUP